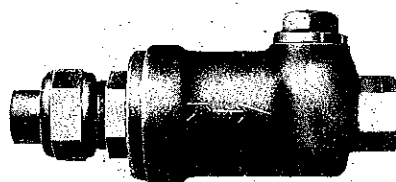


COPYRIGHT, 1916, BY THE

Westinghouse Traction Brake Company.

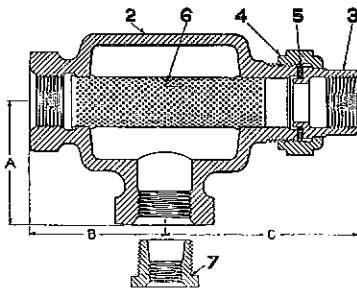


Centrifugal Dirt Collectors,
Branch Pipe Tees,
Strainers, Check Valves, Mufflers.

Part Catalog No. T 3516-2. August, 1916.

(SUPERSEDING ISSUE OF JULY, 1913.)

BRAKE PIPE STRAINERS.



DIMENSIONS AND NET WEIGHTS

Size	A	B	C	Net Weight
1 1/4"	2 7/8"	3 1/4"	4 5/8"	7 1/2 lbs.
1"	2 1 3/8"	3 1/2"	4 5/8"	5 7/8 lbs.
3/4"	2 3/4"	3 1/8"	4 1/8"	5 1/4 lbs.

*1 1/4-INCH BRAKE PIPE STRAINER.

1 1/4-inch Brake Pipe Strainers are furnished with Electric Locomotive Brake Equipments when 1 1/4" brake pipe is specified, also with Equipments for Freight Cars which are interchangeable with steam railroads.

Piece No. 2151. 1 1/4" x 1 1/4" x 1 1/4" Brake Pipe Strainer, complete Price, \$.60

Pc. No.	Ref. No.		Price
2182	2	1 1/4" x 1 1/4" x 1 1/4" Strainer Body (includes 6)	\$.30
2155	3	1 1/4" Union Swivel	.12
2154	4	1 1/4" Union Nut	.12
2183	5	1 1/4" Union Gasket	.03
2153	6	Strainer	.10

†1-INCH BRAKE PIPE STRAINER.

1-inch Brake Pipe Strainers are furnished with Automatic Brake Equipments for Electric Locomotives or Cars when 1" brake pipe is specified.

Piece No. 2148. 1" x 1" x 1" Brake Pipe Strainer, complete Price, \$.60

Pc. No.	Ref. No.		Price
2180	2	1" x 1" x 1" Strainer Body (includes 6)	\$.30
1750	3	1" Union Swivel	.10
1749	4	1" Union Nut	.10
1755	5	1" Union Gasket	.02
2150	6	Strainer	.10

‡ 3/4-INCH AND 1/2-INCH BRAKE PIPE STRAINER.

3/4-inch and 1/2-inch Brake Pipe Strainers are furnished when 3/4" or 1/2" brake pipe is specified.

Piece No. 3310. 3/4" x 3/4" x 3/4" Brake Pipe Strainer, complete Price, \$1.00

Pc. No.	Ref. No.		Price
3309	2	3/4" x 3/4" x 3/4" Strainer Body (includes 6)	\$.75
3307	3	3/4" Union Swivel	.10
3306	4	3/4" Union Nut	.10
3308	5	3/4" Union Gasket	.02
3305	6	Strainer	.10

*NOTE A—To meet special conditions we have provided a 1 1/4" x 1 1/4" x 3/4" Brake Pipe Strainer, Pc. 6141, Price \$1.00, to avoid the cumbersome appearance of the standard 1 1/4" Strainer, Pc. 2151, if bushed. Pc. 6141 will be supplied only as ordered and can be furnished with 3/8" side opening bushed to 1/2" (Pc. 6145) or to 3/4" (Pc. 11496) if desired, at the same price. Repair parts for these special strainers are the same as for the standard, except Body, Pc. 6142, for the 1 1/4" x 1 1/4" x 3/4" Strainer, Price \$.75, and Bushings, 3/8" x 1/2", Pc. 9332, and 3/8" x 3/4", Pc. 10089, Price, \$.05 each.

†NOTE B—If desired to have side opening bushed for smaller than 1" pipe, orders should so state and specify as follows: 1" x 1" x 3/4" Brake Pipe Strainer, Pc. 4989; 1" x 1" x 1/2" Brake Pipe Strainer, Pc. 2179; or 1" x 1" x 3/8" Brake Pipe Strainer, Pc. 10089, Price, \$.60 each. Repair parts for these Strainers are the same as for the standard, except Bushings, 1" x 3/4", Pc. 6983; 1" x 1/2", Pc. 2181 and 1" x 3/8", Pc. 10045, Price, \$.05 each.

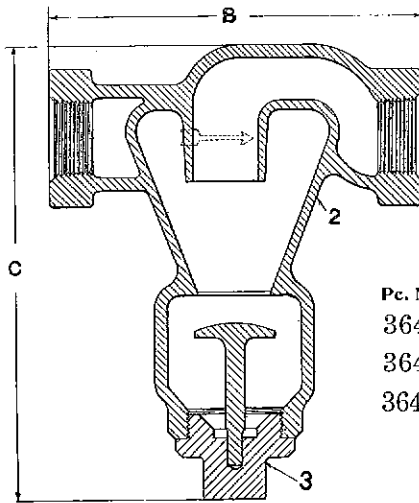
‡NOTE C—3/4" and 1/2" Brake Pipe Strainers, being special, are made up and supplied only to meet special conditions where 3/4" or 1/2" pipe is specified. If desired to have one side opening bushed, orders should so state and specify as follows: 3/4" x 3/4" x 1/2" Brake Pipe Strainer, Pc. 11592 or 3/4" x 3/4" x 3/8", Brake Pipe Strainer, Pc. 10088, Price, \$1.00 each. Repair parts for these Strainers are the same as for the standard, except Bushings, Ref. No. 7, 3/4" x 1/2", Pc. 9332 and 3/4" x 3/8" Pc. 10089, Price, \$.05 each. 1/2" x 1/2" x 1/4" Brake Pipe Strainer is made by bushing all openings from 3/4" to 1/2".

Orders must give PIECE NUMBER and NAME of part wanted.

CENTRIFUGAL DIRT COLLECTORS.

1-INCH CENTRIFUGAL DIRT COLLECTOR.

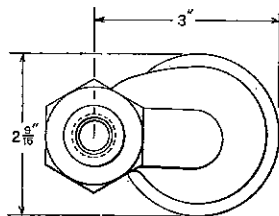
The 1" Centrifugal Dirt Collector takes the place of the Brake Pipe Strainer and is furnished with equipments only when specially ordered and at the additional price involved.



DIMENSIONS AND NET WEIGHT

Size	Width	B	C	Net Wt.
1"	4 $\frac{3}{8}$ "	7 $\frac{1}{2}$ "	9 $\frac{1}{6}$ "	9 lbs.

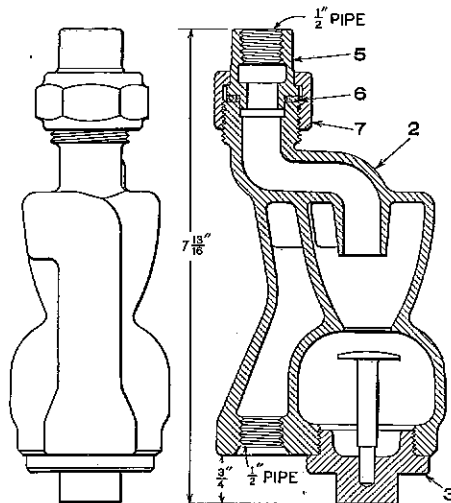
Pc. No.	Ref. No.	Name of Part	Price
36454		Centrifugal Dirt Collector, complete . . .	\$1.20
36453	2	Body90
36450	3	Deflector and Plug30



1/2-INCH CENTRIFUGAL DIRT COLLECTOR FOR VERTICAL PIPE.

The 1/2" Centrifugal Dirt Collector is recommended for use with Motor Car and Electric Locomotive Brake Equipments to protect the Feed and Reducing Valves against dirt, foreign matter, etc. This Dirt Collector is furnished only when specially ordered and at the additional price involved.

Piece No. 56483. 1/2-inch Centrifugal Dirt Collector, complete Price, \$1.50



Net Weight, 3 $\frac{1}{2}$ lbs.

Pc. No.	Ref. No.	Name of Part	Price
56486	2	Body	\$1.10
56484	3	Deflector and Plug35
2166	5	1/2" Union Swivel04
2204	6	1/2" Union Gasket01
2165	7	1/2" Union Nut05

Orders must give **PIECE NUMBER** and **NAME** of part wanted.

Subject to Quotation

BRANCH PIPE TEES.

Branch Pipe Connection with Union and Vertical Outlet from Brake Pipe and Side Connection for Branch Pipe.

This type of Connection between the Brake Pipe and Branch Pipe is recommended where there is any tendency to deposit moisture in the Branch Pipe in excessive quantities. Branch Pipe Tees are furnished only when specially ordered and at the additional price involved.

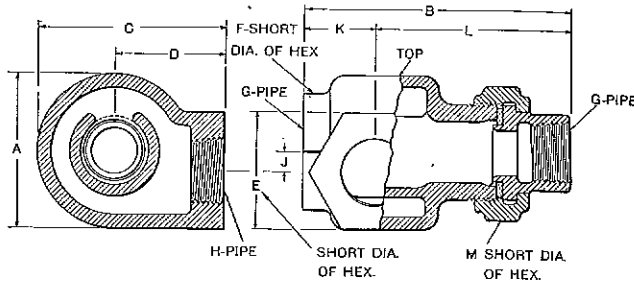


FIG. 1.

Pc. No.	Price
47166. 1" x 1" x 1" Branch Pipe Tee	\$.65
47165. 1 1/4" x 1 1/4" x 1 1/4" Branch Pipe Tee	\$.80
47163. 1 1/4" x 1 1/4" x 1" Branch Pipe Tee	\$.80

DIMENSIONS AND NET WEIGHTS

Size	A	B	C	D	E	F	G	H	J	K	L	M	Net Wt.
1" x 1" x 1"	3"	5 5/8"	3 5/8"	2 3/8"	2 1/4"	2 1/4"	1"	1"	3/8"	1 3/8"	3 3/8"	2 3/8"	4 1/2 lbs.
1 1/4" x 1 1/4" x 1 1/4"	3 5/8"	5 11/16"	4 5/16"	2 1/2"	2 3/4"	2 3/4"	1 1/4"	1 1/4"	7/16"	1 11/16"	4 3/8"	2 11/16"	6 1/2 lbs.
1 1/4" x 1 1/4" x 1"	3 5/8"	5 11/16"	4 1/8"	2 1/4"	2 1/4"	2 3/8"	1 1/4"	1"	1 1/16"	1 1/16"	4 3/8"	2 11/16"	6 lbs.

Branch Pipe Connection with Union and Vertical Outlet from Brake Pipe and Bottom Connection for Branch Pipe,

Branch Pipe Connection with Bottom Outlet to Branch Pipe, Fig. 2, is furnished when more convenient in piping than the design shown in Fig. 1, and only when ordered.

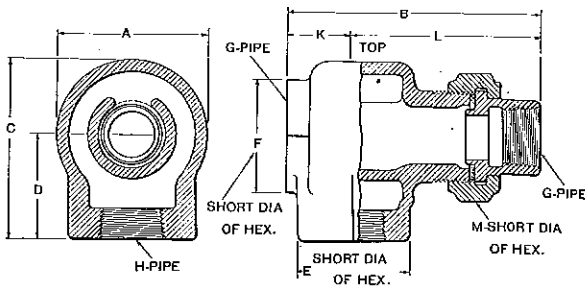


FIG. 2.

Pc. No.	Price
47167. 1" x 1" x 1" Branch Pipe Tee	\$.65
47168. 1 1/4" x 1 1/4" x 1 1/4" Branch Pipe Tee	\$.80
47164. 1 1/4" x 1 1/4" x 1" Branch Pipe Tee	\$.80

DIMENSIONS AND NET WEIGHTS

Size	A	B	C	D	E	F	G	H	K	L	M	Net Wt.
1" x 1" x 1"	3"	5 5/8"	3 5/8"	2 3/8"	2 1/4"	2 1/4"	1"	1"	1 3/8"	3 3/8"	2 3/8"	4 1/2 lbs.
1 1/4" x 1 1/4" x 1 1/4"	3 5/8"	5 11/16"	4 1/8"	2 1/4"	2 3/4"	2 3/4"	1 1/4"	1 1/4"	1 1/16"	4 3/8"	2 11/16"	6 lbs.
1 1/4" x 1 1/4" x 1"	3 5/8"	5 11/16"	4 1/8"	2 1/4"	2 1/4"	2 3/8"	1 1/4"	1"	1 1/16"	4 3/8"	2 11/16"	5 1/2 lbs.

Orders must give PIECE NUMBER and NAME of part wanted.

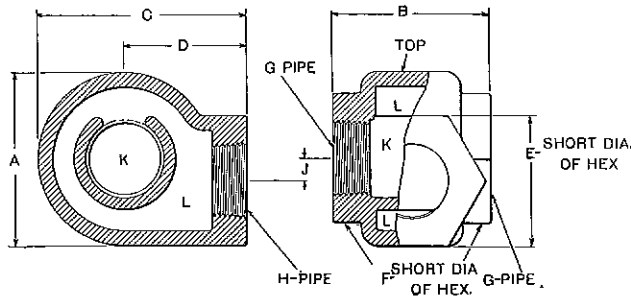
All Leather and Rubber Goods Subject to Quotation

T 3516-2

BRANCH PIPE TEES.

Branch Pipe Connection With Vertical Outlet from Brake Pipe and Side Connection for Branch Pipe.

This Branch Pipe Tee is identical with that shown on Page 4, Fig. 1, except for the Union Connection, and is furnished only when ordered.



Pc. No.	Size	Price
43108.	1" x 1" x 1" Branch Pipe Tee	\$.40
43110.	1 1/4" x 1 1/4" x 1 1/4" Branch Pipe Tee	\$.50
43279.	1 1/4" x 1 1/4" x 1" Branch Pipe Tee	\$.50

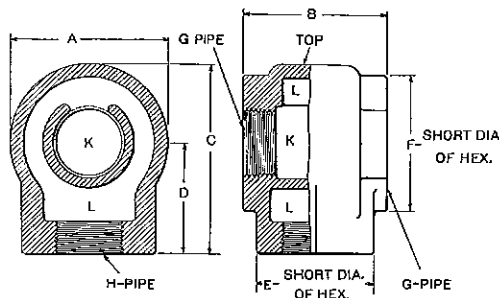
FIG. 3.

DIMENSIONS AND NET WEIGHTS

Size	A	B	C	D	E	F	G	H	J	Net Wt.
1" x 1" x 1"	3"	2 3/4"	3 5/8"	2 1/8"	2 1/4"	2 1/4"	1"	1"	3/8"	3 1/2 lbs.
1 1/4" x 1 1/4" x 1 1/4"	3 5/8"	3 3/4"	4 1/16"	2 1/2"	2 3/4"	2 3/4"	1 1/2"	1 1/2"	7/16"	5 1/2 lbs.
1 1/4" x 1 1/4" x 1"	3 5/8"	3 3/8"	4 1/16"	2 1/4"	2 1/4"	2 3/4"	1 1/4"	1"	1/16"	5 lbs.

Branch Pipe Connection With Vertical Outlet from Brake Pipe and Bottom Connection for Branch Pipe.

This Branch Pipe Tee is identical with that shown on Page 4, Fig. 2, except for the Union Connection, and is furnished only when ordered.



Pc. No.	Size	Price
43107.	1" x 1" x 1" Branch Pipe Tee	\$.40
43109.	1 1/4" x 1 1/4" x 1 1/4" Branch Pipe Tee	\$.50
42981.	1 1/4" x 1 1/4" x 1" Branch Pipe Tee	\$.50

FIG. 4.

DIMENSIONS AND NET WEIGHTS

Size	A	B	C	D	E	F	G	H	Net Wt.
1" x 1" x 1"	3"	2 3/4"	3 5/8"	2 1/8"	2 1/4"	2 1/4"	1"	1"	3 1/2 lbs.
1 1/4" x 1 1/4" x 1 1/4"	3 5/8"	3 3/4"	4 1/16"	2 1/2"	2 3/4"	2 3/4"	1 1/2"	1 1/2"	5 lbs.
1 1/4" x 1 1/4" x 1"	3 5/8"	3 3/8"	4 1/16"	2 1/4"	2 1/4"	2 3/4"	1 1/4"	1"	4 1/2 lbs.

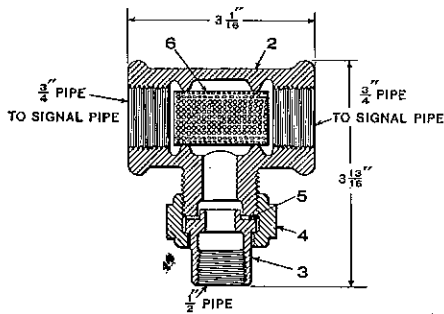
Orders must give PIECE NUMBER and NAME of part wanted.

All Leather and Rubber Goods
 Subject to Quotation

STRAINERS.

SIGNAL PIPE STRAINER.

The $\frac{3}{4}$ " x $\frac{3}{4}$ " x $\frac{1}{2}$ " Signal Pipe Strainer is furnished with complete Air Signal Equipment for Motor Cars for the purpose of insuring the delivery of clean air from the Main Signal Pipe to the Branch Pipe and so protecting the Car Discharge Valve against dirt and foreign matter.



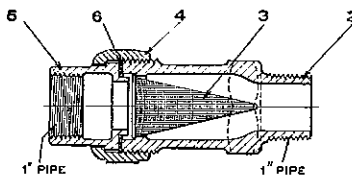
Net Weight, 1 1/2 lbs.

Piece No. 2240. $\frac{3}{4}$ " x $\frac{3}{4}$ " x $\frac{1}{2}$ " Signal Pipe Strainer, complete . . . Price, \$.40

Pc. No.	Ref. No.	Description	Price
2497	2	Strainer Body (includes 6)	\$.25
2166	3	$\frac{1}{2}$ " Union Swivel	.04
2165	4	$\frac{1}{2}$ " Union Nut	.05
2204	5	$\frac{1}{2}$ " Union Gasket	.01
2242	6	Strainer	.08

1-INCH BRANCH PIPE STRAINER.

The 1-inch Branch Pipe Strainer is standard for use in the branch pipe where the triple valve employed is of the "pipeless" type, as the Type "M" and Type "L", and is also used in the same relative location in the Universal Equipment.



Net Weight, 1 1/2 lbs.

Piece No. 9523. 1" Branch Pipe Strainer, complete . . . Price, \$.60

Pc. No.	Ref. No.	Description	Price
9522	2	Body	\$.30
2411	3	Strainer	.10
1749	4	1" Union Nut	.10
1750	5	1" Union Swivel	.10
1755	6	1" Union Gasket	.02

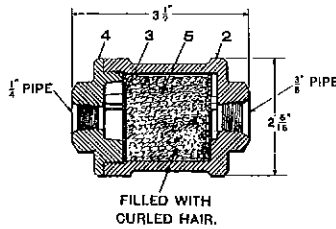
Orders must give **PIECE NUMBER** and **NAME** of part wanted.

Subject to Quotation

STRAINERS—Continued.

$\frac{3}{8}$ x $\frac{1}{4}$ -INCH AIR STRAINER.

The $\frac{3}{8}$ x $\frac{1}{4}$ Air Strainer is furnished with complete Electro-Pneumatic Signal Equipment for Motor Cars for the purpose of insuring the delivery of clean air from the Main Reservoir to the Combined Magnet and Bracket.



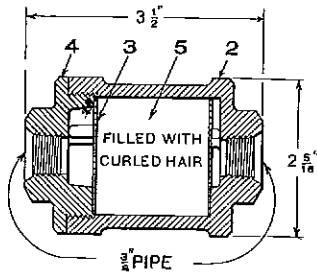
Net Weight, 1 1/2 lbs.

Piece No. 42636. $\frac{3}{8}$ x $\frac{1}{4}$ Air Strainer, complete Price, \$1.00

Pc. No.	Ref. No.	Price
3273	2 Body	\$.55
1044	3 Plates for Strainer (2 pieces) each04
42637	4 Cap30
5	1/2 oz. Curled Hair, per lb.60

$\frac{3}{8}$ -INCH AIR STRAINERS.

This Strainer is furnished with complete Pneumatic Signal Equipment for Motor Cars for the purpose of insuring the delivery of clean air from the Main Reservoir to the Signal Reducing Valve. This Strainer is also standard for use with Type J Electric Compressor Governors.



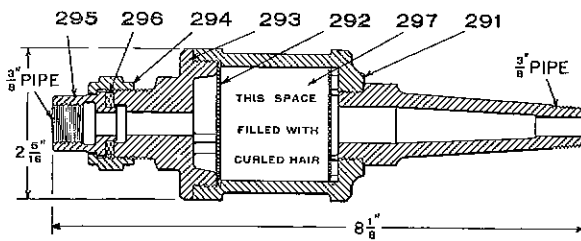
Net Weight, 1 1/2 lbs.

Piece No. 3272. $\frac{3}{8}$ Air Strainer, complete Price, \$1.00

Pc. No.	Ref. No.	Price
3273	2 Body	\$.55
1044	3 Strainer (2 pieces) each04
3274	4 Cap30
5	1/2 oz. Curled Hair, per lb.60

This Strainer is standard for use with Type S Electric Compressor Governors and Compressor Switches.

Piece No. 31748. $\frac{3}{8}$ Air Strainer, complete Price, \$1.25



Net Weight, 2 1/4 lbs.

Pc. No.	Ref. No.	Price
33863	291 Body and Nipple	\$.75
1044	292 Strainer (2 pcs.) each04
31745	293 Cap30
2384	294 $\frac{3}{8}$ Union Nut05
2385	295 $\frac{3}{8}$ Union Swivel04
2386	296 $\frac{3}{8}$ Union Gasket01
297	1/2 oz. Curled Hair, lb.60

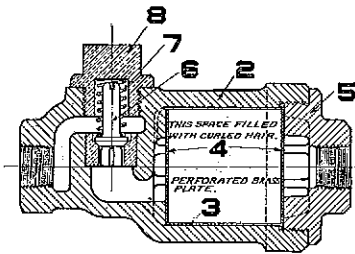
*NOTE—We also furnish this type of Strainer in the 1/2-inch size if desired, for use with Storage Brake Equipment, as follows:

Piece No. 6997. 1/2 Air Strainer, complete Price, \$1.00

Pc. No.	Ref. No.	Price
6994	2 Body	\$.55
1044	3 Strainer (2 pieces) each04
6995	5 Cap30
	1/2 oz. Curled Hair	per lb., 60

Orders must give PIECE NUMBER and NAME of part wanted.

Subject to Quotation
COMBINED STRAINERS AND CHECK VALVES.



A-1 STRAINER AND CHECK VALVE.

The A-1 Strainer and Check Valve is no longer standard and is listed only for convenience in ordering repair parts.

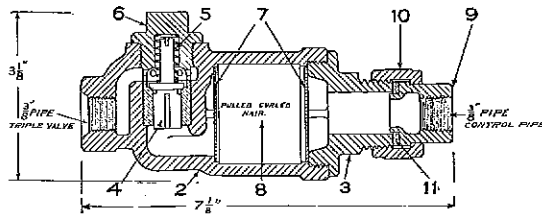
Piece No. 9689. A-1 Strainer and Check Valve, complete . Price, \$3.00

Pc. No.	Ref. No.	Price	Pc. No.	Ref. No.	Price	
9690	2	\$2.00	9693	6	Check Valve25
	3	.60	*9694	7	Valve Spring02
1044	4	.04	9692	8	Valve Cap25
3274	5	.30				

Net Weight, 2½ lbs.

The A-2 Strainer and Check Valve has been superseded by the C-1-3-0 Strainer and Check Valve, Pc. 24897, and is listed only for convenience in ordering repair parts.

The B-2 Strainer and Check Valve has been superseded by the C-1-3-6 Strainer and Check Valve, Pc. 24899, and is listed only for convenience in ordering repair parts.

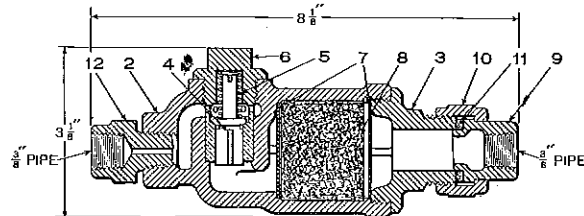


A-2, Net Weight, 3½ lbs.

Piece No. 15414. A-2 Strainer and Check Valve, complete . . Price, \$3.00

Piece No. 15474. B-2 Strainer and Check Valve, complete . . Price, \$3.00

Pc. No.	Ref. No.	Price
15415	2	Body, bushed \$1.75
14661	3	Cap Nut50
15411	4	Check Valve25
*16453	5	Valve Spring02
21476	6	Valve Cap25
1044	7	Strainer (2 pieces) each04
	8	Curled Hair per lb. .60
14294	9	Union Swivel20
2165	10	Union Nut05
2204	11	Union Gasket01
15473	12	Choke Fitting10



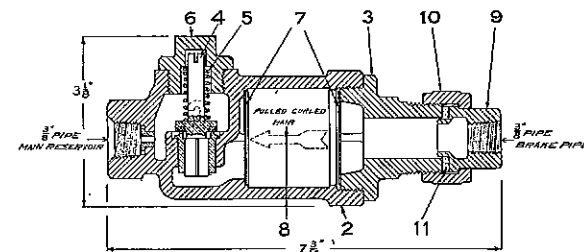
B-2, Net Weight, 3½ lbs.

C STRAINER AND CHECK VALVE.

The C Strainer and Check Valve has been superseded by the C-1-20-8 Strainer and Check Valve, Pc. 24898, and is listed only for convenience in ordering repair parts.

Piece No. 18473. C Strainer and Check Valve, complete . . Price, \$3.00

Pc. No.	Ref. No.	Price
18472	2	Body, bushed \$1.50
14661	3	Cap Nut50
18468	4	Check Valve35
*18469	5	Valve Spring03
18467	6	Valve Cap20
1044	7	Strainer (2 pieces) each04
	8	Curled Hair per lb. .60
14294	9	Union Swivel20
2165	10	Union Nut05
2204	11	Union Gasket01



Net Weight, 3½ lbs.

*NOTE—The following table is shown to enable Railway Storekeepers and Air Brake men to identify the various springs used in combined Strainers and Check Valves cataloged herein. This table does not represent a specification for the springs in question, and should not be used as such.

As a further assistance to Storekeepers, the springs are packed in small lots, with a tag attached to each lot bearing the proper piece number.



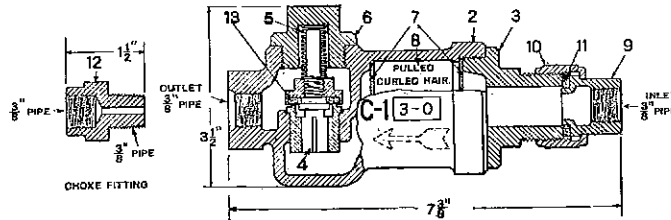
SPRING IDENTIFICATION.

Pc. No.	Out. Dia. "A"	Dia. Wire "B"	Free Height "C"	No. Coils	Material	Name of Spring	Where Used
9694	1 9/16"	.0226"	1 3/8"	11 1/2	Brass	Valve Spring B-1	Strainer and Check Valve
16453	1 1/8"	.0285"	1 3/8"	16	Phosphor Bronze	Valve Spring B-2	Strainer and Check Valve
18469	1 1/2"	.057"	1 7/8"	11	Phosphor Bronze	Valve Spring C	Strainer and Check Valve

Orders must give PIECE NUMBER and NAME of part wanted.

All Leather and Rubber Goods T 3516-2 Subject to Quotation

C STRAINER AND CHECK VALVE.



Net Weight, 3 3/4 lbs.

Ref. No.	NAME OF PART	C-1-3-0 (Note A)	C-1-3-6 (Note B)	C-1-5-0 (Note C)	C-1-20-8 (Note D)	C-1-20-9 (Note E)	Price
	Strainer and Check Valve, complete	24897	24899	31778	24898	25799	\$3.00
2	Body, bushed	25908	25908	25908	25908	25908	1.50
3	Cap Nut	14661	14661	14661	14661	14661	.50
4	Check Valve, complete (includes 13)	25909	25909	25909	25909	25909	.35
*5	3 lb. Valve Spring	25921	25921				.03
*5	20 lb. Valve Spring				25920	25920	.05
*5	5 lb. Valve Spring			31488			.03
6	Valve Cap	24893	24893	24893	24893	24893	.20
7	Strainer (2 pieces) each	1044	1044	1044	1044	1044	.04
8	Curled Hair						per lb. .60
9	Union Swivel	14294	14294	14294	14294	14294	.20
10	Union Nut	2165	2165	2165	2165	2165	.05
11	Union Gasket	2204	2204	2204	2204	2204	.01
12	Choke Plug with 3/2" hole		15473				.10
12	Choke Plug with 3/4" hole					25907	.10
12	Choke Plug with 1/2" hole				25906		.10
13	Leather Seat	25788	25788	25788	25788	25788	.02

NOTE A—The C-1-3-0 Strainer and Check Valve, superseding the A-2 type, is used with AMM or AML Automatic Brake Equipments having a control pipe.

NOTE B—The C-1-3-6 Strainer and Check Valve, superseding the B-2 type, is standard for use with Air Signal Equipment for Electric Locomotives having EL Brake Equipment.

NOTE C—The C-1-5-0 Strainer and Check Valve is special for use with AML Equipment.

NOTE D—The C-1-20-8 Strainer and Check Valve is standard for use with EL Locomotive Brake Equipment for Dead Engine Fixtures.

NOTE E—The C-1-20-9 Strainer and Check Valve is special for use with SME (Straight Air Brake with Emergency Feature) Equipment.

NOTE F—The letter and first numeral of the designation indicate the type of Strainer, the second numeral the value of the spring in pounds, and the third numeral the diameter of the choke in sixty-fourths of an inch.

*NOTE—The following table is shown to enable Railway Storekeepers and Air Brake men to identify the various springs used in C Strainers and Check Valves cataloged herein. This table does not represent a specification for the springs in question and should not be used as such.

As a further assistance to Storekeepers, the springs are packed in small lots, with a tag attached to each lot bearing the proper piece number.



SPRING IDENTIFICATION.

Pc. No.	Out. Dia. "A"	Dia. Wire "B"	Free Height "C"	No. Coils	Material	Name of Spring	Where Used
25920	1/2"	.072"	1 5/16"	10	Phosphor Bronze	Valve Spring	C-1-20-9 and C-1-20-8 Strainer and Check
25921	1 1/2"	.0403"	1 3/4"	15	Phosphor Bronze	Valve Spring	C-1-3-6 and C-1-3-0 Strainer and Check
31488	1/2"	.045"	1.77"	14	Phosphor Bronze	Valve Spring	C-1-5-0 Strainer and Check

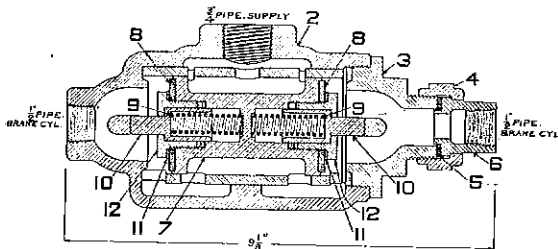
Orders must give PIECE NUMBER and NAME of part wanted.

DOUBLE CHECK VALVES.

No. 8 DOUBLE CHECK VALVE.

The No. 8 Double Check Valve is furnished with EL Brake Equipments for Double-Truck Electric Locomotives having the brake cylinders mounted on the trucks.

Piece Number 12833. No. 8 Double Check Valve, complete Price, \$7.00



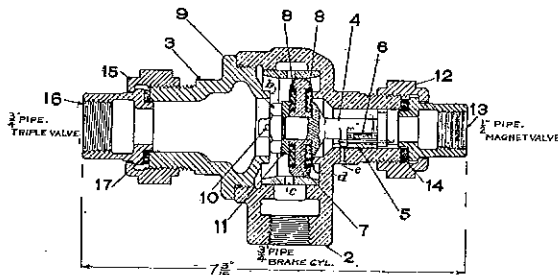
Net Weight, 10 lbs.

Pc. No.	Ref. No.	Price
12834	2	Body, bushed \$4.00
12832	3	Cap50
2165	4	1/2" Union Nut05
2204	5	1/2" Union Gasket01
2166	6	1/2" Union Swivel04
12835		Piston Valve, complete (includes one of 7 and two of 8, 9, 10, 11 and 12) 2.50
12826	7	Piston Valve Body 1.00
12829	8	Leather Seat10
*12827	9	Spring03
12828	10	Equalizing Stem30
12830	11	Washer03
12831	12	Retaining Nut30

No. 10 DOUBLE CHECK VALVE.

The No. 10 Double Check Valve was formerly furnished with No. 4 Electro-Pneumatic Brake Equipments, but has been superseded by the No. 12 Double Check Valve, Pc. 28218, and is listed only for convenience in ordering repair parts.

Piece Number 15383. No. 10 Double Check Valve, complete Price, \$8.00



Net Weight, 5 lbs.

Pc. No.	Ref. No.	Price
15384	2	Body, bushed \$4.00
15372	3	Cap75
15404		Piston and Slide Valve, complete (includes 4, 5, 6, 7, 9, 10, 11 and two of 8) 2.50
14330	4	Piston Rod75
14334	5	Slide Valve20
14335	6	Slide Valve Spring10
15373	7	Piston Head75
14297	8	Piston Seat05
14331	9	Piston Rod Nut10
5735	10	Cotter01
14298	11	Washer10
2165	12	1/2" Union Nut05
2166	13	1/2" Union Swivel04
2204	14	1/2" Union Gasket01
3306	15	3/4" Union Nut10
3307	16	3/4" Union Swivel10
3308	17	3/4" Union Gasket02

*NOTE—The following table is shown to enable Railway Storekeepers and Air Brake men to identify the springs used in the Double Check Valves cataloged herein. This table does not represent a specification for the springs in question and should not be used as such.

As a further assistance to Storekeepers, the springs are packed in small lots, with a tag attached to each lot bearing the proper piece number.



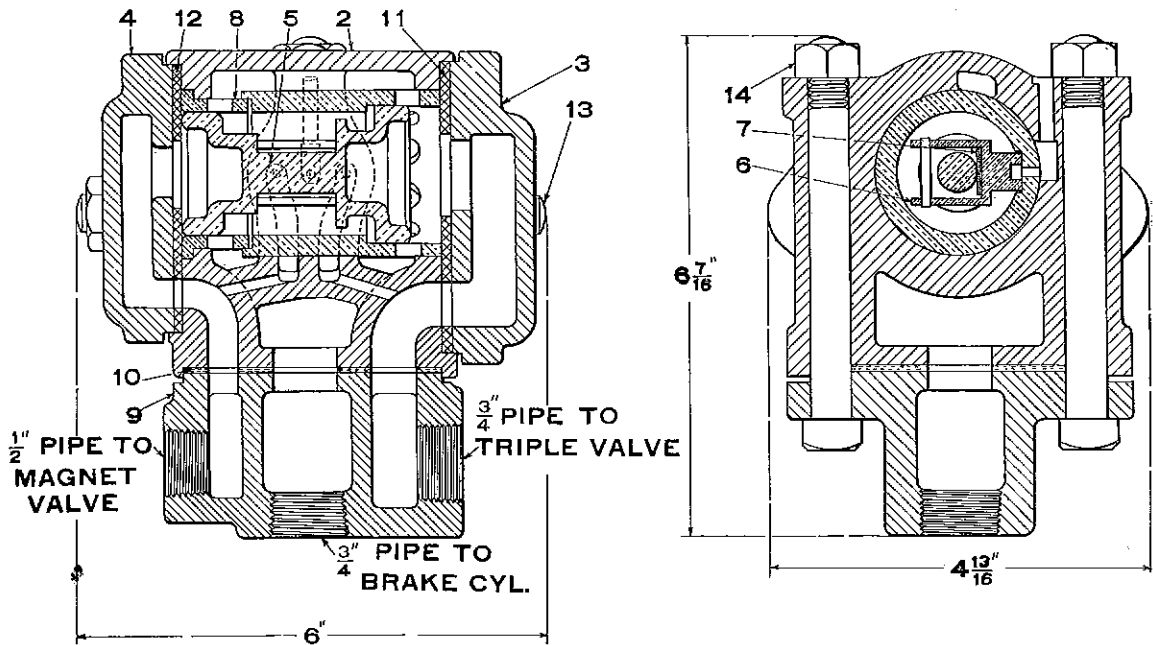
SPRING IDENTIFICATION.

Pc. No.	Out. Dia. "A"	Dia. Wire "B"	Free Height "C"	No. Coils	Material	Name of Spring	Where Used -
12827	1 1/2"	.064"	2"	12	Phosphor Bronze	Piston Valve Spring	No. 8 Double Check Valve

Orders must give PIECE NUMBER and NAME of part wanted.

All Leathers and Rubber Goods
Subject to Quotation

No. 12 DOUBLE CHECK VALVE.



Net Weight, 17 lbs.

The No. 12 Double Check Valve is standard for use with Brake Equipment, employing the No. 4 Electro-Pneumatic System.

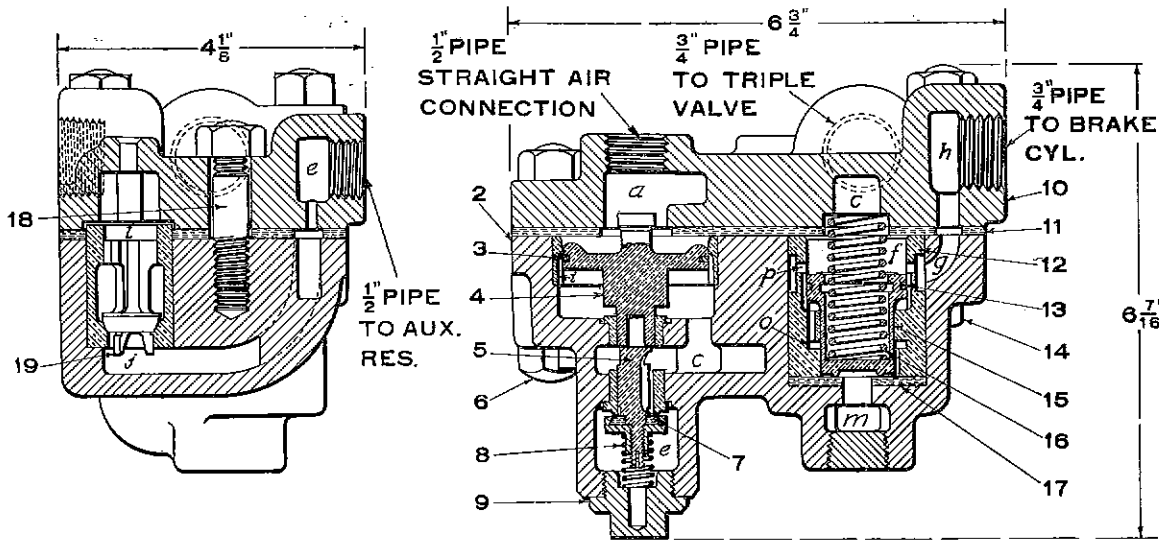
Piece No. 28218. No. 12 Double Check Valve with Type A Pipe Bracket, complete Price, \$10.00

Pc. No.	Ref. No.		Price
28200	2	Body	\$5.00
28193	3	Cap for Automatic End60
28194	4	Cap for Electric End60
27172	5	Double Piston, complete (includes 6 and 7)	2.00
27082	6	Slide Valve50
27083	7	Slide Valve Spring03
27080	8	Piston Bush75
27269	9	Type A Pipe Bracket75
27086	10	Pipe Bracket Gasket05
28196	11	Gasket (Automatic End)20
28198	12	Gasket (Electric End)20
27266	13	Stud and Nut05
25143	14	Bolt and Nut03

Orders must give PIECE NUMBER and NAME of part wanted.

Subject to Quotation

No. 14 DOUBLE CHECK VALVE.



Net Weight, 17 lbs.

The No. 14 Double Check Valve is used with the M-22 and M-24-A Brake Valve in combined Straight Air and Automatic AMM Brake Equipments.

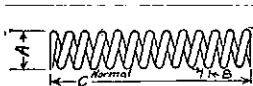
Piece No. 31790. No. 14 Double Check Valve, complete Price, \$12.00

Pc. No.	Ref. No.	Description	Price
31833	2	Body, bushed	\$6.00
14284	3	Supply Valve Piston Ring	.20
13136	4	Supply Valve Piston, complete (includes 3)	1.00
*51529	5	Auxiliary Reservoir Check Valve, complete (includes 7)	.60
15105	6	1/2" x 2 3/4" Tee Head Bolt	.05
51528	7	Rubber Seat	.02
†51551	8	Auxiliary Reservoir Check Valve Spring	.04
14560	9	Auxiliary Reservoir Check Valve Cap Nut	.30
31793	10	Pipe Bracket, complete	2.00
31808	11	Pipe Bracket Gasket	.30
31805	12	Double Piston Bush	1.50
31672	13	Double Piston Ring	.15
11008	14	1/2" x 3 1/4" Tee Head Bolt	.05
31834	15	Double Piston, complete (includes 13)	.80
†31810	16	Double Piston Spring	.08
31542	17	Double Piston Seat	.05
44275	18	1/2" x 2 1/4" Stud with Hex. Nut	.04
7470	19	Exhaust Check Valve	.40

*When New Style Auxiliary Reservoir Check Valve Pc. 51529 is applied, Spring Pc. 51551 must be applied also.

†NOTE—The following table is shown to enable Railway storekeepers and Air Brake men to identify the various springs used in the No. 14 Double Check Valve cataloged herein. This table does not represent a specification for the springs in question and should not be used as such.

As a further assistance to Storekeepers, the springs are packed in small lots, with a tag attached to each lot bearing the proper piece number.



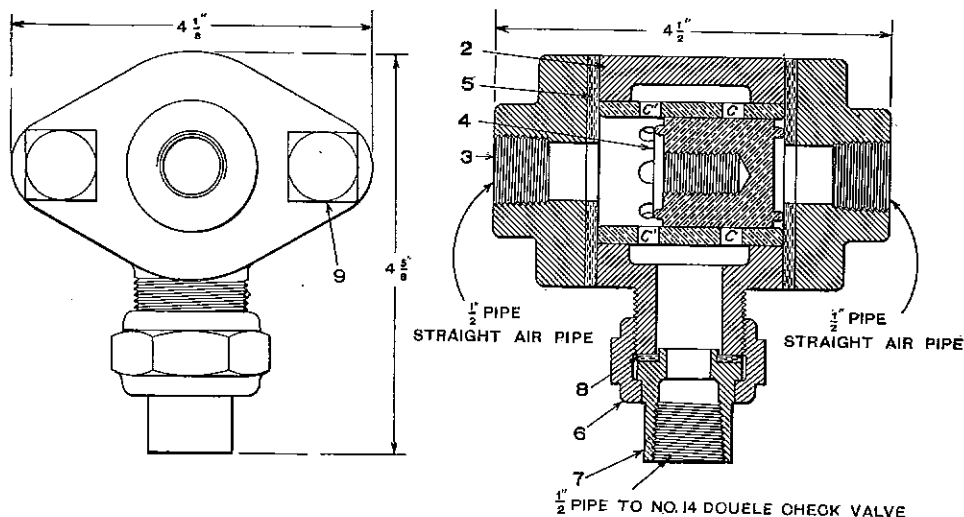
SPRING IDENTIFICATION.

Pc. No.	Out. Dia. "A"	Dia. Wire "B"	Free Height "C"	No. Coils	Material	Name of Spring	Where Used
51551	3/16"	.064"	3 1/2"	8	Phosphor Bronze	Auxiliary Reservoir Check Valve Spring	No. 14 Double Check Valve
31810	3/16"	.091"	2 5/16"	12 1/2	Phosphor Bronze	Double Piston Spring	No. 14 Double Check Valve

Orders must give PIECE NUMBER and NAME of part wanted.

~~All~~ **Iron and Rubber Goods**
Subject to Quotation

No. 15 DOUBLE CHECK VALVE.



Net Weight, 7 lbs.

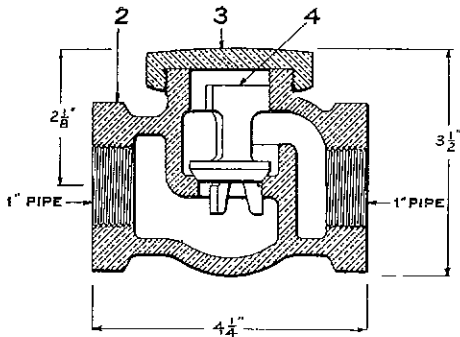
The No. 15 Double Check Valve is used with the M-24-A Brake Valve in Combined Straight-Air and Automatic AMM Brake Equipments.

Piece No. 40182. No. 15 Double Check Valve, complete Price, \$4.00

Pc. No.	Ref. No.		Price
40181	2	Body, complete	\$2.50
40178	3	Cap30
40177	4	Check Valve60
40179	5	Gasket15
2165	6	1/2" Union Nut05
2166	7	1/2" Union Swivel04
2204	8	1/2" Union Gasket01
16809	9	Square Head Bolt and Nut03

Orders must give **PIECE NUMBER** and **NAME** of part wanted.

CHECK VALVES.

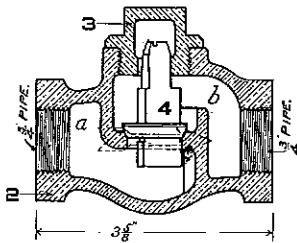


Net Weight, 5 lbs.

1-INCH CHECK VALVE.

Piece No. 5615. 1" Check Valve, complete Price, \$3.50

Pc. No.	Ref. No.	Price
5616	2 Body	\$2.50
5618	3 Cap50
5617	4 Valve50

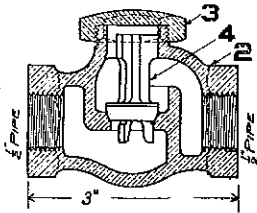


Net Weight, 2 1/2 lbs.

3/4-INCH CHECK VALVE.

Piece No. 10021. 3/4" Check Valve, complete . . . Price, \$1.75

Pc. No.	Ref. No.	Price
10022	2 Body	\$1.00
10024	3 Cap35
10023	4 Valve40

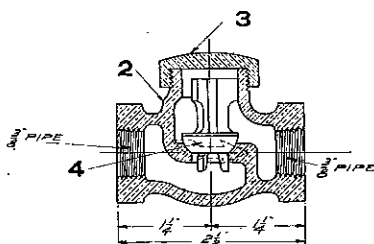


Net Weight, 1 1/2 lbs.

1/2-INCH CHECK VALVE.

Piece No. 7473. 1/2" Check Valve, complete Price, \$1.50

Pc. No.	Ref. No.	Price
7469	2 Body	\$.90
7468	3 Cap25
7470	4 Valve40



Net Weight, 1 lb.

3/8-INCH CHECK VALVE.

Piece No. 19738. 3/8" Check Valve, complete . Price, \$1.40

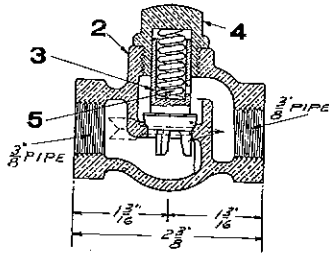
Pc. No.	Ref. No.	Price
19736	2 Body	\$.75
7468	3 Cap25
19737	4 Valve40

Orders must give PIECE NUMBER and NAME of part wanted.

MISCELLANEOUS.

$\frac{3}{8}$ -INCH CHECK VALVE WITH SPRING.

The $\frac{3}{8}$ " Check Valve with Spring, Pc. 21086, is furnished with AMS and AMM Brake Equipments when special emergency devices are included. The spring is adjusted to give a differential of 10 lbs. pressure.



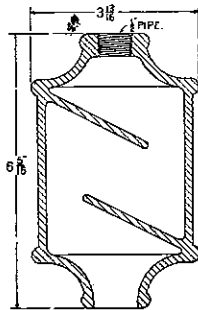
Net Weight, $\frac{3}{4}$ lb.

Piece No. 21086. $\frac{3}{8}$ " Check Valve with Spring, complete Price, \$1.50

Pc. No.	Ref. No.		Price
10036	2	Body	\$.60
10037	3	Valve50
10038	4	Cap35
*21085	5	Spring03

DUPLEX CHECK VALVE.

For Duplex Check Valve, see Part Catalog T 3517-1, Whistles and Whistle Valves.



Net Weight, 4 1/2 lbs.

EXHAUST MUFFLER.

Exhaust Muffler, Pc. 14677, is furnished with SM-1, SM-3 and SME Brake Equipments for muffling exhaust from brake valve.

Piece No. 14677. CMA Exhaust Muffler Price, \$.25

*NOTE—The following table is shown to enable Railway Storekeepers and Air Brake men to identify the springs used in the $\frac{3}{8}$ " Check Valve cataloged herein. This table does not represent a specification for the springs in question and should not be used as such. As a further assistance to Storekeepers, the springs are packed in small lots, with a tag attached to each lot bearing the proper piece number.



SPRING IDENTIFICATION.

Pc. No.	Out. Dia. "A"	Dia. Wire "B"	Free Height "C"	No. Coils	Material	Name of Spring	Where Used
21085	$\frac{5}{16}$ "	.04"	1 1/4"	16 1/2	Phosphor Bronze	Valve Spring	$\frac{3}{8}$ " Check Valve with Spring

Orders must give PIECE NUMBER and NAME of part wanted.

Westinghouse Traction Brake Company,

Pittsburgh, Pa., U. S. A.

WORKS AT WILMERDING, PA.

OFFICES:

ATLANTA - - - - -	Candler Building
BOSTON - - - - -	- Exchange Building
CHICAGO - - - - -	- Railway Exchange Building
COLUMBUS - - - - -	Columbus Savings and Trust Building
DENVER - - - - -	- Tramway Building
HOUSTON, TEX. - - - - -	- 4802 Main Street
LOS ANGELES - - - - -	- Pacific Electric Building
MEXICO CITY, MEXICO - - - - -	4a Puente de Alvarado, No. 100
NEW YORK - - - - -	- City Investing Building
PITTSBURGH - - - - -	- Westinghouse Building
PORTLAND, ORE. - - - - -	- Spalding Building
ST. LOUIS - - - - -	- Boatmen's Bank Building
ST. PAUL - - - - -	- Endicott Building
SALT LAKE CITY - - - - -	- McIntyre Building
SAN FRANCISCO - - - - -	- Pacific Building
TOPEKA - - - - -	- New England Building



ASSOCIATED COMPANIES:

THE AMERICAN BRAKE COMPANY,
St. Louis, Mo.

WESTINGHOUSE AIR BRAKE COMPANY,
Pittsburgh, Pa.

CANADIAN WESTINGHOUSE COMPANY, LTD.,
Hamilton, Ontario, Canada.

THE WESTINGHOUSE BRAKE COMPANY, LTD.,
London, England.

THE WESTINGHOUSE COMPANY, LTD.,
Petrograd, Russia.

WESTINGHOUSE BRAKE COMPANY OF
AUSTRALASIA, LTD.,
Concord West, New South Wales, Australia.

WESTINGHOUSE AUTOMATIC AIR AND STEAM
COUPLER COMPANY,
St. Louis, Mo.

WESTINGHOUSE PACIFIC COAST BRAKE
COMPANY,
Emeryville, Calif.

COMPAGNIE DES FREINS WESTINGHOUSE,
Sevran, France.

COMPAGNIA ITALIANA WESTINGHOUSE
DEI FRENI,
Turin, Italy.

WESTINGHOUSE EISENBAHN BREMSSEN
GESELLSCHAFT,
Hanover, Germany.